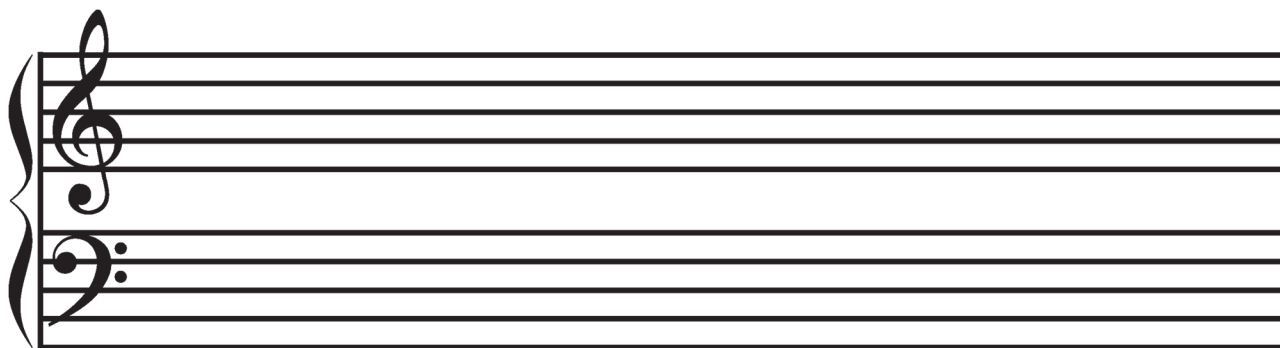


## Grade 1 - Lesson 1

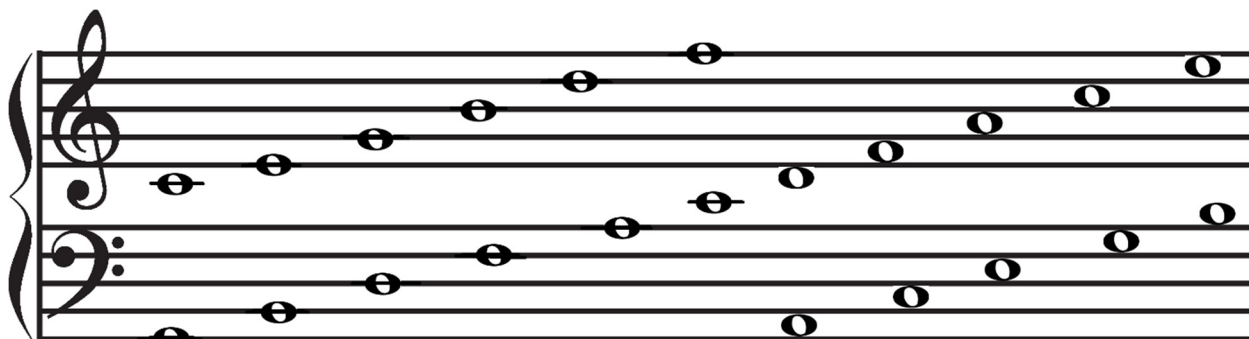
Your first lesson. Let's jump right in.

The place we put music notes on in order to read them and play them is called a staff. The grand staff has two sets of lines. Each set has five lines. At the left is a bracket. The bracket shows that you play these two together. At the top you see a sign. This sign is called the treble clef. On the piano, the treble clef is usually played with the right hand, although there are times when the left hand plays there too. It is also called the G- Clef as it shows where the G note is.

The bottom set of lines has a sign that is called a Bass Clef. The Bass clef is usually played with the left hand, although there are times that the right hand plays down there. I say "down" because the Bass Clef has the low notes, and the Treble Clef has the high notes. The Bass Clef is also called the F Clef as it shows where the F note is. The first thing you are going to do, is print out the worksheet and make a row, or several rows each of the Treble Clef, then the Bass Clef. Don't skip this step, as they are not easy to make. Well, the Treble Clef anyway.



The second task is to practice how to make notes. There is a note on each line, and a note between each line. The notes on lines are called lines, and the notes between the lines are called spaces. First copy the lines, then the spaces, like this:



Now practice the Treble and Bass Clef again, and also practice how to make the notes:

